



Kansas City Chipper

A Publication of the Kansas City Woodcarvers Club, Inc.



Les Catherell, Secretary

Meeting Minutes & Notes

February 26, 2008

Business Meeting: President Willis called the meeting to order at 7:02 p.m. No changes for the minutes on the January meeting.

Treasurer's Report: Todd Ramsay reported the following; Beg. Bal. \$6,998.64, Income: \$190.41 Exp:\$5,164.45, End Bal.: \$2,024.60.

Old Business: **Bass Pro Shop :** Still need help on 28th 6 - 9 p.m. and 29th 3 - 6 p.m. for the **Independence Bass Pro Shop**. They are interested in our club displaying carvings and giving some Demos. The date for this event is March 28 - 29th, if you would be interested in participating in this even contact : Jim Willis at 816-505-1046 Email - jwillis2@kc.rr.com or Les Catherell at 816-436-5525 or Email - lescatherell@sbcglobal.net

Directions: To get to **Bass Pro Shop from the West**, take I-70 East to 291/470 South. Take the first exit onto 40 Hwy and travel West to the first stop light (Bass Pro Drive) turn right into the Falls at Crackerneck. This will lead you to Bass Pro Shops.

To get to **Bass Pro Shops from the East**, take I-70 West to 291/470 South. Take the first exit onto 40 Hwy and travel West to the first stop light (Bass Pro Drive) turn right into the Falls at Crackerneck. This will lead you to Bass Pro Shops.

Great Plains Woodcarvers 42nd Annual Woodcarving Show April 5-6th at Cessna Activity Center, 2744 S. George Washington Blv., Wichita, Kansas. For more information contact; Randy Landen at 316-788-0175 / Bob Munroe at 316-744-0629 / Norma Nicks at 316-721-8957.

Land Learning Outing: Marsha Leimkuehler is the contact person for the one day display and demonstration at Dean Lake, MO on August 23, 2008. The web site for the foundation and to contact her is www.landlearning.org . More information contact Jim Willis at 816-505-1046.

New Business: We had four new visitor's that came to the meeting. One visitor joined the club tuesday night, Jim Blair , welcome to the club Jim.

Ed Zinger and Dennis Brockerd reported on the KC Woodcarvers Show coming up March 21 thru 22. Ed said that there is a need for items for the auction, if you have anything to donate contact Ed at, 913-397-6992 or just bring item to the show. Dennis had good news that 70 tables and exhibitors from 9 different states have signed up for the show to date. If you have not sent in you application or need one for the show contact Dennis at 913-897-3725.

Marty reported that we need door prize items for the brunch meeting at the show, contact Marty at 816- 741 - 8718 or mepping@kc.rr.com.

Thank's to Jack & Linda Taylor for stepping up to help find people to man the tables for admission. Also needing help at the Judging area on 21st. of March. Call Jack or Linda at 816-444-9083 if you can help out on these problems.

Attention!!

Brunch Meeting: The brunch will not be held at Jumpin Catfish. Thank's to ,Harvie Farnam, he has set up the new location for the brunch at **Bob Evens Restaurant** at 1680 NW Chipman Rd. , Lee's Summit MO. Cost will be \$7.00 per person and tip at the table. Below is a map showing the location. Great job Harvie !



Carving Show is coming up March 21 - 22 so plan on carving some ornaments for the tree sale.

Seminars: Hill & Holler Woodcarving Seminar: This seminar will have Relief and Caricature Carving. Instructor's are Harold Enlow, Mike Shipley and John Engler. Each instructor has a maximum of 14 student openings, so if you are interested inquire (ASAP). Cost is \$136.00 plus cost of roughouts. Deadline for Registering is June 1 2008. Contact: Dale Garrison at 417- 746-4039 or E-mail - hillandhollerwoodcarvingclub@yahoo.com

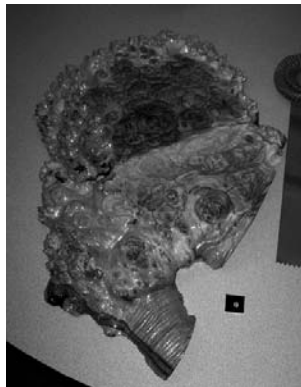


Miniature and anything pertaining to Valentine's Day was the theme for this month, Jerry Reinhardt shared these two carvings, Jim Willis showed a very small Wolf and Ed Zinger shared his three carvings.



Larry Everitt shared a Santa he carved, a visitor David McCool showed this Nativity Scene and the two Indians' in canoes' and Les Catherell shared a carving of a flower bowl.

Carving of The Month



Jack Taylor won 1st. place with his Green Winged Teal, Les Catherell took second place with a contemporary style of a carving from a piece of burl maple root and Todd Ramsay shared his caricature carving of a Indian from a Lynn Doughty piece.

Great Carving's Everyone !

Next Month's Theme

Bring any Carving of your Choice to Share!!!!!!

Carving Opportunities: These carving times are chances to spend time carving with and learning from others. We have fun and fellowship, see each others projects, share wood, and show different tools. It is reported that joking and kidding around abounds. We know that the time seems to fly! Please let us know if there are any changes or additions to the list below.

★ Informal-carving sessions are held on monday mornings 8:00a.m. at Rodger T. Sermon Comm. Ctr. , Truman Rd. & Noland Rd. 816-325-7370. ★ Monday evenings 6:30 p.m. at Faith Lutheran Church, 67th & Roe, 913-897-2521 or 816-322-0094. ★ Tuesday evenings 7:00 p.m. at the North Cross United Methodist Church, 1321 N.E. Vivion Road, 816-741-8718. ★ Wednesday afternoon 2:00 p.m. at the Blue Springs Parks & Rec. Building 4000 NW Vesper St. / \$1.00 per person donation.

Les Catherell
606 NE 66th Terr.
Gladstone, MO 64118



Kansas City Chipper

Officers 2007- 2008

Jim Willis
Dave Whisenhunt

President
Vice-President

Les Catherell
Todd Ramsay

Secretary
Treasurer

Please see the Roster for phone numbers of officers and others.

Next Meeting:

Tuesday, March 25th - 7:00 p.m.

Faith Lutheran Church, 67th and Roe, Prairie Village, KS

Next Months Program Still in the Making

Club Needs Help on Programs at our Meetings

The club is looking for member's who might be interested in giving a program at the meetings. This means that you could give a demo on carving an item, painting andetc. Also if you may know of anyone outside of the club that could do a program that would be great. Contact this information to Dave Whisenhunt at (Home #) 913-829-6857 or (Work #) 913-208-8327, Also Jim Willis at 816-505-1046 or E-mail jwillis2@kc.rr.com